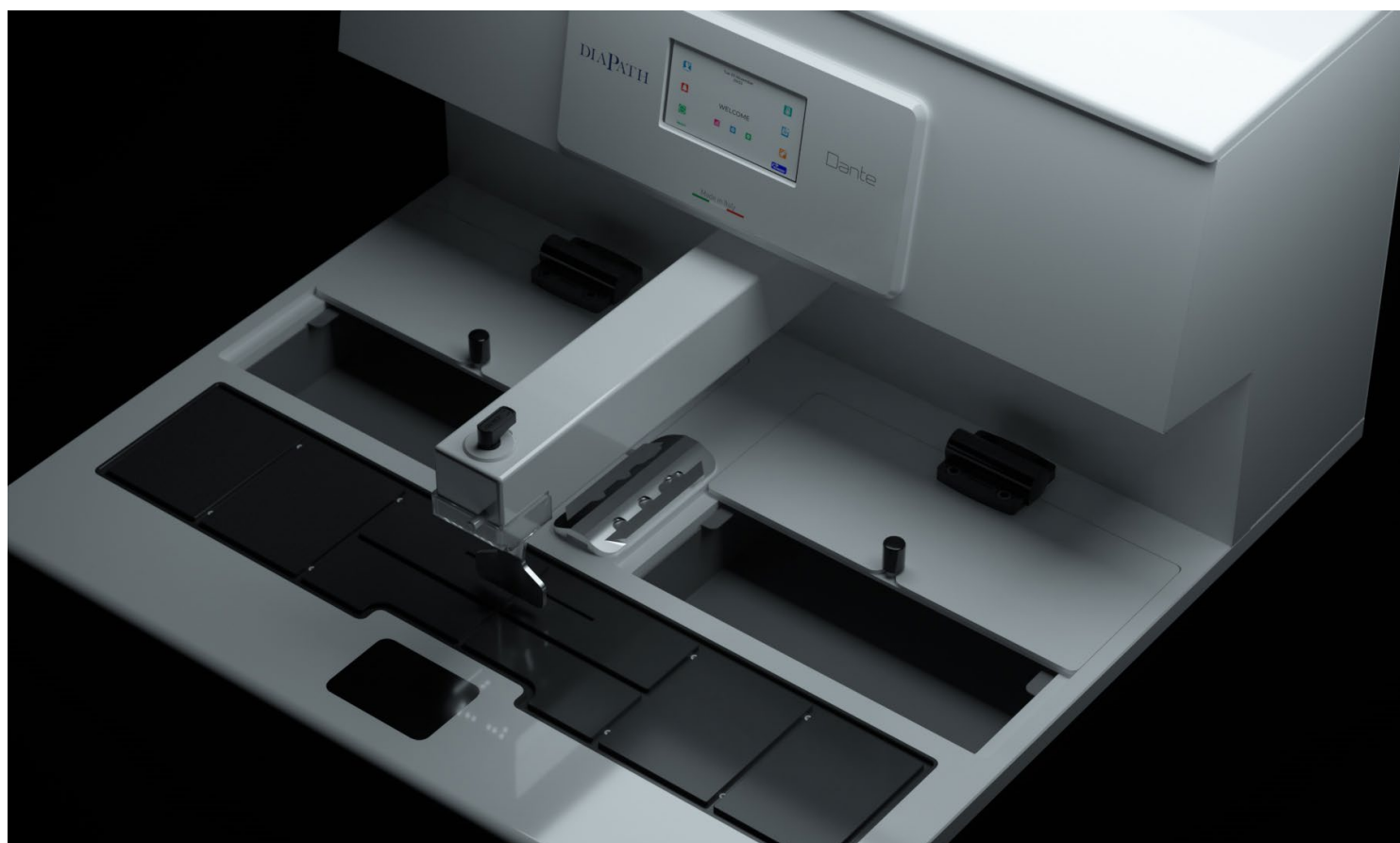


DIAPATH

Constant Innovation in Anatomic Pathology



Dante

The Embedding System for
the best comfort and efficiency

EMBEDDING MODULE + COLD PLATE

SDSDC9000

SDSDF9000

SDSDF9100



MADE IN ITALY

Dante, 100% Made in Italy.

Dante is referred to as the **Supreme Poet and Father of the Italian language**. For Diapath, Dante is what we believe in. **Made in Italy and Italian Design** are not just inspirations, but Values we live every day: **Love for Beauty and Well-Made things**. This is our Way to **Excellence**.

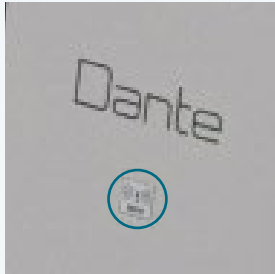


The Modular solution, designed to simplify the workflow.

Custom-made comfort. We know very well how much it is necessary to make working procedures **fast**, and above all **comfortable**, in lab-life. We know very well how much it is necessary in the lab to make working procedures fast and above all comfortable. That's way, **Diapath has developped Dante, the System including Embedding Module and Cold Plate**. Dante allows to improve both posture and to **protect the musculoskeletal system** of the healthcare professional over time, thanks to its linear, **ergonomic and functional design**. Furthermore, Dante Emebdding System consists of independent and flexible modules, able to save space in the laboratory. For this reason, **Diapath has developed Dante, the Combo solution including Embedding Module and Cold Plate**.



The unique advantages of Dante, designed for you.



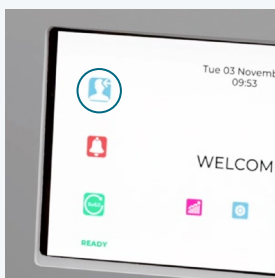
RFID TECHNOLOGY

Advanced traceability functions.



TANK INCREASED BY 6 L

For an autonomy increased by 35%.
The wide paraffin tank is equipped with a filtration system, capable of holding all the impurities present in the paraffin grains.



CUSTOMIZATION OF ID USER PROFILE

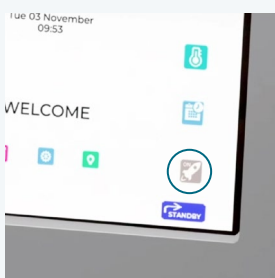
Possibility to set advanced personalization options by Avatar.



ULTRASONIC SENSOR

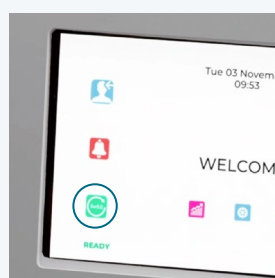
The Innovative system offers the possibility of dispensing paraffin automatically detecting the mould under the dispensing arm.

The system advantages.



BOOST FUNCTION

For full operation just 30 minutes after switch-on.



REFILL FUNCTION

With immediate paraffin filling alert on the display.



1 MODULAR SYSTEM

The System consists of an Embedding module and a cold plate, fully combinable in multiple solutions.

2 6L PARAFFIN TANK

Paraffin can be melted with a temperature range of +50°C a +75°C

3 WIDE HEATED SURFACE

Equipped with grooves capable of draining the paraffin.

4 LED LIGHT

The work area is illuminated by the adjustable led light integrated in the dispensing head.

5 INTUITIVE, EASY-TO-USE DISPLAY

with **Smart Screen System**, the intelligent system is able to alert the operator with a visual signal of the system status.

6 WIDE COLD PLATE

For up to 126 standard cassettes or 33 super mega cassettes.

7 ULTRASONIC SENSOR

It is able to dispense paraffin by detecting the presence of the mould.

8 OUTLINE CHANNEL

For the collection of water after defrosting.

9 HEATED AND REMOVABLE FORCEPS-HOLDER, TO PREVENT CROSS-CONTAMINATION





OPTIONAL ACCESSORIES



Magnifying lens
with led light



Heated forceps
suitable for
DIAforceps Advance
(2 mm e 1 mm)



Pedal controller



Wax scraper



Heated forceps
DIAforceps Advance
(2 mm e 1 mm)

1 DANTE, THE MODULAR SOLUTION



Dante is: new functions, developed for you.



Your performances always more green.

Dante allow to visualize instrument energy consumption in terms of eco-friendly performances.



Visualization of instrument's operation time and efficiency.



PATENTED MATERIALS

The patented materials guarantee maximum protection against corrosion, wear and abrasion.



EASY TO CLEAN

Dante allows an easy cleaning of the worktop even at low temperatures compared to standard materials.



Dante is ergonomic design, because we take care of you.

AUTOMATIC PARAFFIN DISPENSER: COMFORT FOR THE OPERATOR

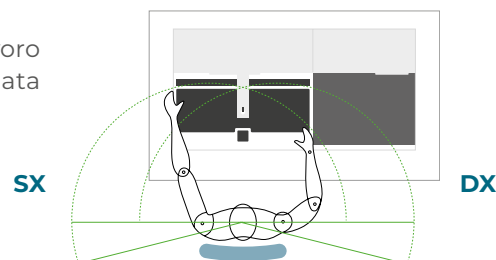
The paraffin can be dispensed in three different ways: through manual dispensing lever, pedal controller or ultrasonic sensor. **This prevents the operator from repetitive and incorrect movements on the musculoskeletal system.**

MODULAR SOLUTION, COMPLETE FLEXIBILITY

The modules can be arranged from left to right and vice versa, according to the operator's preferences, **for a safe postural balance.**



Area di lavoro
bilanciata



Dante is an intuitive and advanced software.

4.3" TOUCHSCREEN DISPLAY

The display can be used with different types of gloves (vinyl, nitrile, latex).

COMPLETE CUSTOMIZATION

Dante offers user-friendly icons and **fully customizable Avatars.**

INNOVATIVE REFILL FUNCTION

Operators can be notified when the paraffin tank must be filled up, **avoiding work interruptions related to the paraffin absence.**





Wide Cold Plate.

POWERFUL COOLING SYSTEM

To reach the minimum temperature of -20 °C in about 10 minutes, allowing the solidification of 65 samples in less than 30 minutes. The temperature is managed and displayed by an integrated digital thermoregulator.

LARGE CAPACITY IN MINIMUM SPACE

Provided with an outline channel for water collection after defrosting.



Technical data

	EMBEDDING MODULE	COLD PLATE
CODE	SDSDC9000	SDSDF9000 (model 230V) SDSDF9100 (model 110V)
SIZE (W - D - H)	600x590x410 mm	400x590x410 mm
TANK CAPACITY	6 L	–
LIGHTING	Led with adjustable light	–
HEATING TIME	fully operative in 30 mins	–
COOLING TIME	–	-20 °C in 10 mins
USER INTERFACE DISPLAY	4,3" touchscreen display	touchscreen
OPERATING TEMPERATURE	from +50 °C to +75 °C	from -20 °C to room temperature
WEIGHT	30 kg	23 kg (model 230V) / 29 kg (model 110V)
REGULATORY STANDARD	CE-IVD-UL	CE-IVD

Find out more and request
a **virtual demo experience**
with our product specialists

SCAN HERE



Diapath range of solutions for Anatomic Pathology



Donatello SERIES 3

Automatic
Tissue Processor



Galileo SERIES 2

Rotary
Microtome



Giotto

Automatic
Stainer



Cristallo®

Liquid Coverslipping
Technology

Discover the full range on www.diapath.com/products

Accreditation DIAPATH



Co-funded by the EU
"Horizon 2020" programme



Donatello Series wins
A'Design Award Competition
2019 in the "Scientific
Instruments" category



34th World ranking Design
Award 2021
in the "Medical
Appliances" category



Provider of training
credits recognised by
NSH - National Society
for Histotechnology

Diapath S.p.A.

Via Pietro Savoldini, 71 — 24057 Martinengo (BG) - IT
T +39 0363 986411 — info@diapath.com — diapath.com

