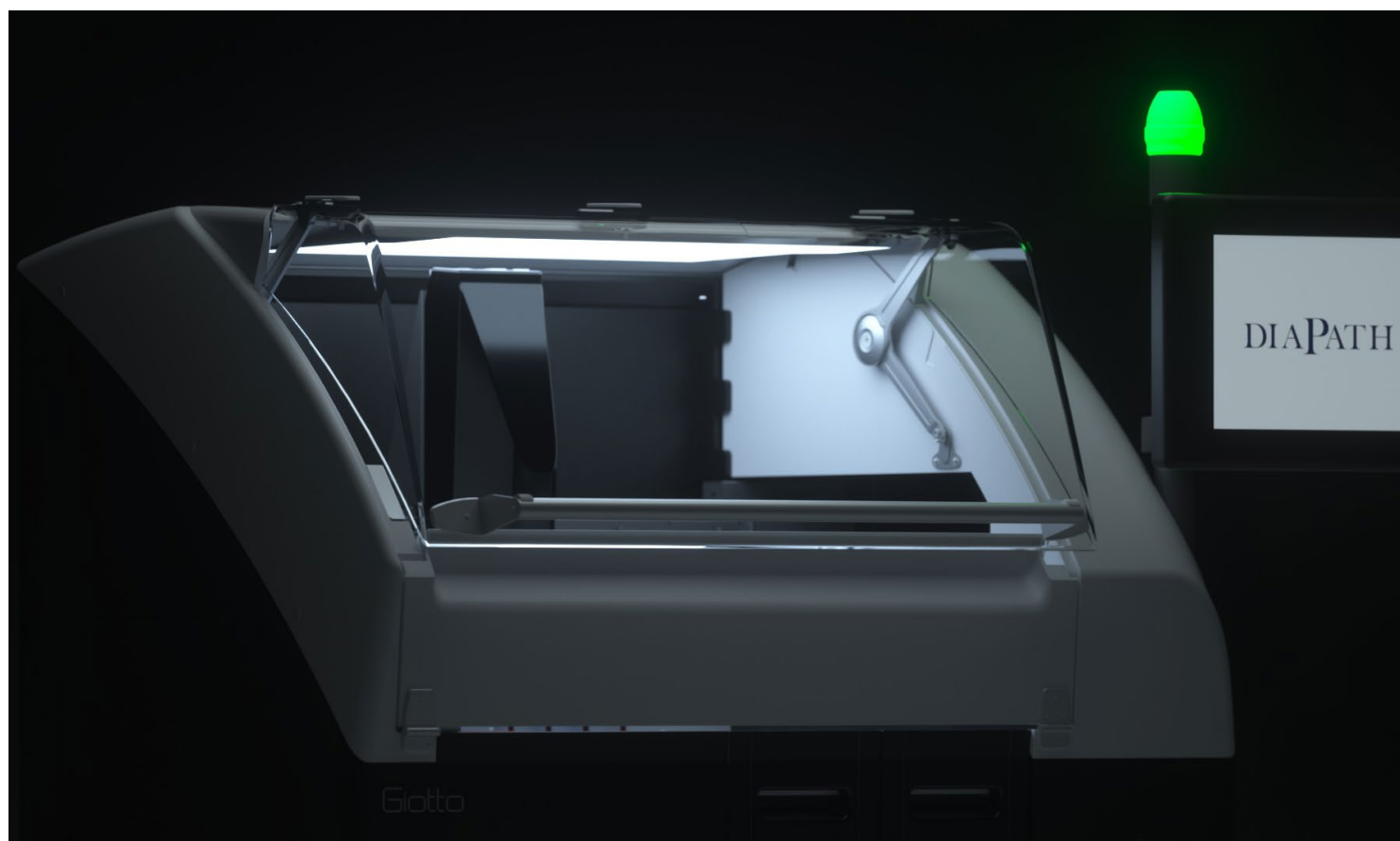


DIAPATH

Constant Innovation in Anatomic Pathology



Giotto

The flexible system
for routine histo-cytological stainings

SDSGT9000



IVD CE

MADE IN ITALY

Giotto, 100% Made in Italy.

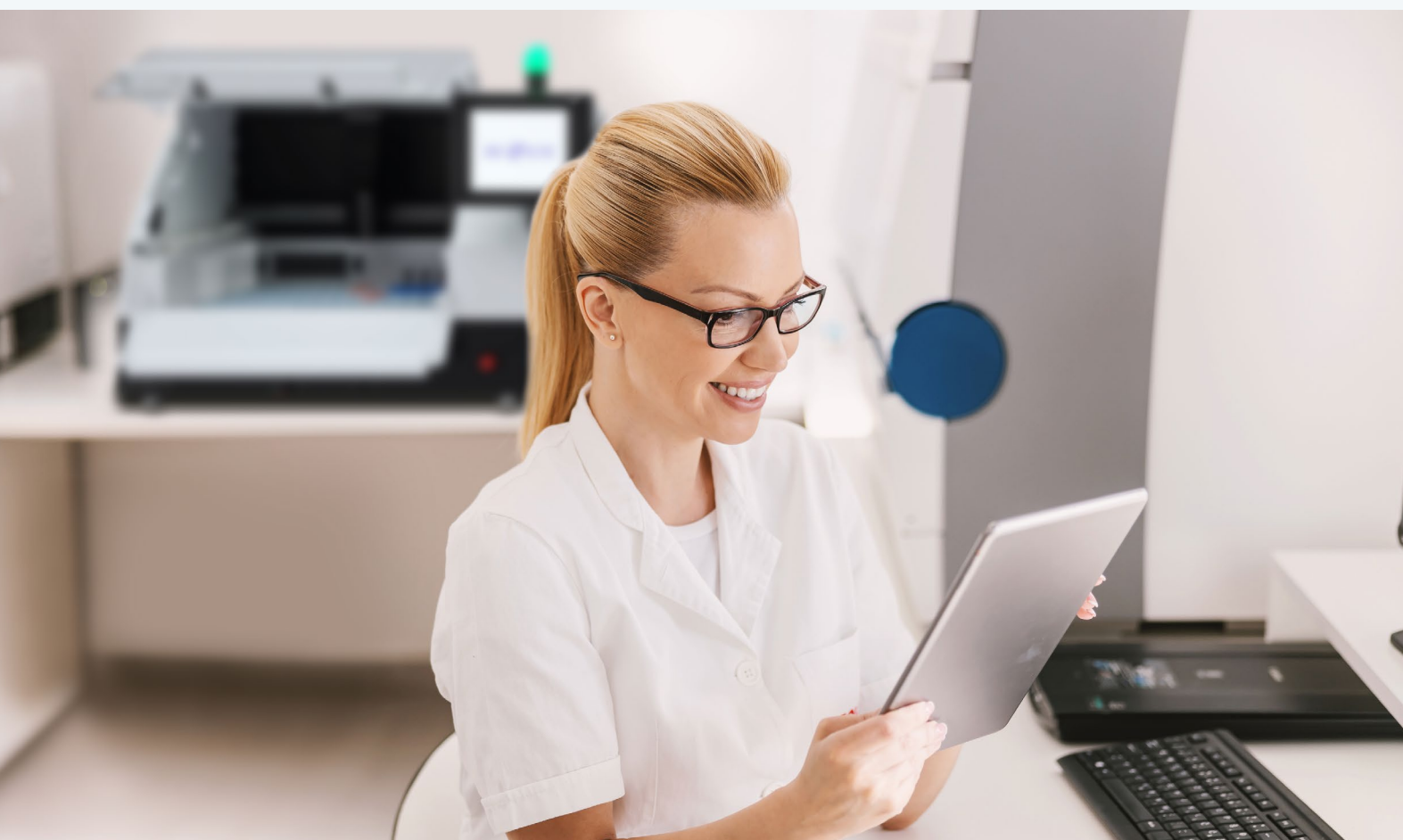
Giotto is one of the most famous Italian painters. With his paintings he led to a great revolution in figurative arts, becoming the model of inspiration for Renaissance artists. He is well known, among others, for having drawn a perfect freehand circle, as proof of his skills.

For us at Diapath, it represents what we believe in. **Made in Italy and Italian Design** are not simple inspirations, but Values we live every day, **our way to Excellence** and **things well done**.

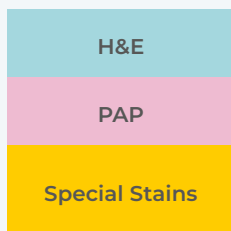


The flexible solution to better meet your needs.

Hematoxylin and Eosin stain constitutes the first level of histopathological investigation. It is extremely important to guarantee high quality results and reproducibility over time. It is equally essential to consider that **each laboratory is unique** with specific needs to satisfy. For these reasons, Diapath developed Giotto automatic staining system. The system is able to obtain **high quality** results while offering **maximum flexibility** in the use of reagents and creation of different staining protocols, in the use of safer and green solvents, in the type of slides analyzed, as well as offering the possibility of mounting the slides "on board" with the innovative Cristallo® solution. All done in **safety** and with maximum **ease of use**.

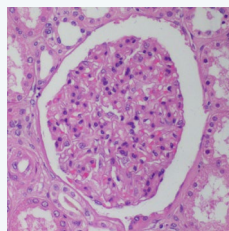


The features of Giotto System, designed for you.



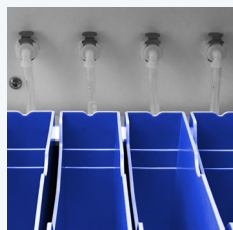
MULTISTAINING

Reagents and protocols optimized for **H&E**, **PAP** and **Special Stains**. Possibility to stain and mount **mega slides** with Cristalloy®.



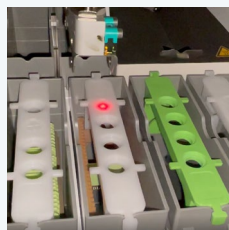
AUTOMATIC REAGENT SCANNING

The robotic arm, equipped with an **ultrasonic sensor**, automatically scans the reagent level to guarantee the **quality of staining** over time. Re-fill, over-fill or reagent replacement notice, managed via software.



WATER PRESSURE SYSTEM

Sensor able to detect any absence of running water supply.



STAIN ID TECHNOLOGY

100% automatic start. Basket handles equipped with unique **identification code** previously associated via software with the desired protocol. Significant reduction of unwanted staining protocol start. Simultaneous management of different protocols.

The advantages of the system.



EASE OF USE AND SAFETY

Intuitive management software based on colored icons. **S3 - Simultaneous Staining Scheduler**, the innovative software capable of setting the **best possible configuration** of the reagents within the instrument in order to **maximize productivity**. **Stain ID** technology, for a simple and 100% intuitive start of the stains. Equipped with several solutions to control and ensure good operation in safety.



QUALITY AND RELIABILITY

Optimized protocols and **freedom to define the desired staining protocol** with unlimited saving possibilities. **High productivity (300-600 slides/hour)** in relation to the staining protocol. A complete range of reagents and dyes is available, as well as xylene-free solutions, such as **Ottix Plus** and **Ottix Shaper**. Possibility of mounting with the innovative Cristalloy® solution.



1

EMERGENCY BUTTON

Button to immediately stop operations in case of need.

2

40 REAGENT TANK STATIONS

Tanks made of resistant plastic material with a capacity of 450 ml.

3

ACTIVATED CHARCOAL FILTER

Filter to capture harmful vapors inside the equipment. Possibility of connection to external suction.

4

DOOR CLOSING SYSTEM

Two-compartment door with software-controlled opening. Electromagnetic sensors.

5

ROBOTIC ARM

System for moving the baskets. Equipped with an ultrasonic sensor for liquid detection and one for scanning operations.

6

SMART LED SYSTEM

Visual system with LED light of several colors to communicate the status of the system at a distance.

7

PC WITH COLOR MONITOR

Touch screen user interface. Simple to use and adjustable.

8

4 TANKS FOR TAP WATER AND WATER PRESSURE SYSTEM

Sensor for detecting the inlet water pressure to ensure hassle-free staining.

9

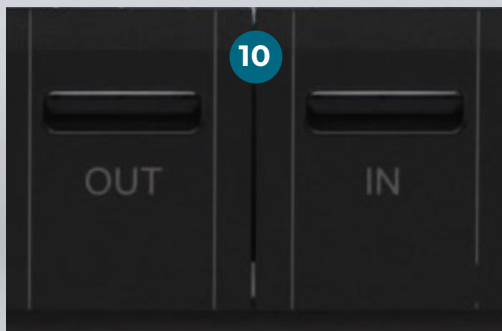
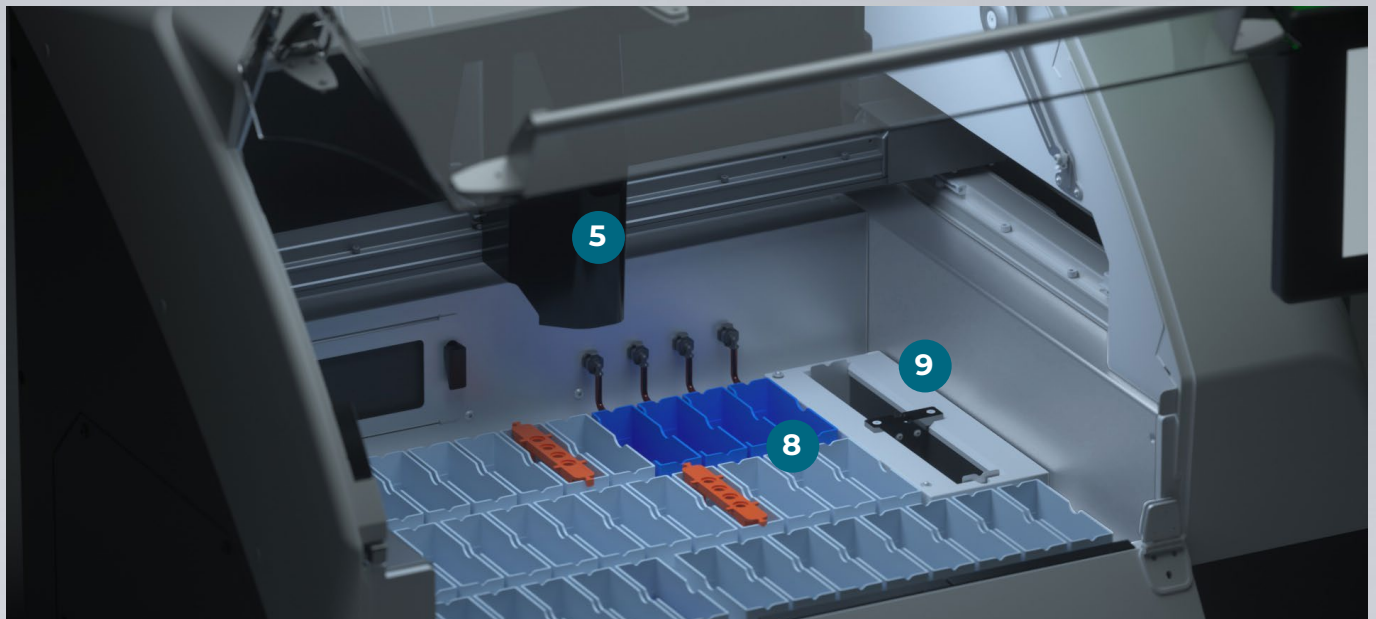
2 HEATED STATIONS - OVEN

From room temperature to 75 °C.

10

IN/OUT DRAWERS

Four IN and OUT positions for slide racks. Continuous loading.



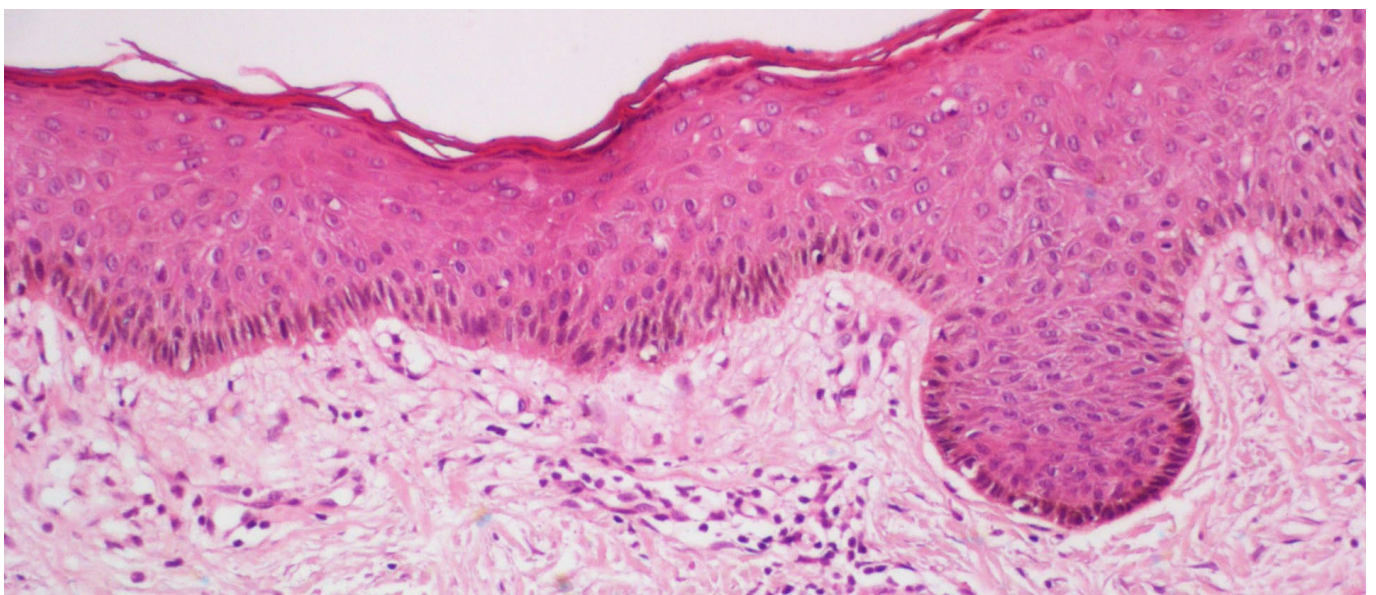
ACCESSORIES

Basket for the exclusive use of Cristallo® with 28 slides capacity

Basket compatible with Leica coverslipper with 30 slide rack capacity

Adapters for baskets of other brands

Handles for baskets of various colors (white, orange, pink, yellow, green, gray)





Giotto System is “Smart”.

REMOTE ASSISTANCE

Remote Assistance for **real-time support** and identification of technical issues.
Diapath will never leave you alone!

SMALL SIZE

The small size allows **two Giotto units** to be housed in the **same space** now required for a **single unit** of other instruments on the market. It is possible to decrease the number of slides to be handled per instrument and take **advantage of the parallel process**, since the two units will work simultaneously in a parallel and independent manner. **Back-up** always active.

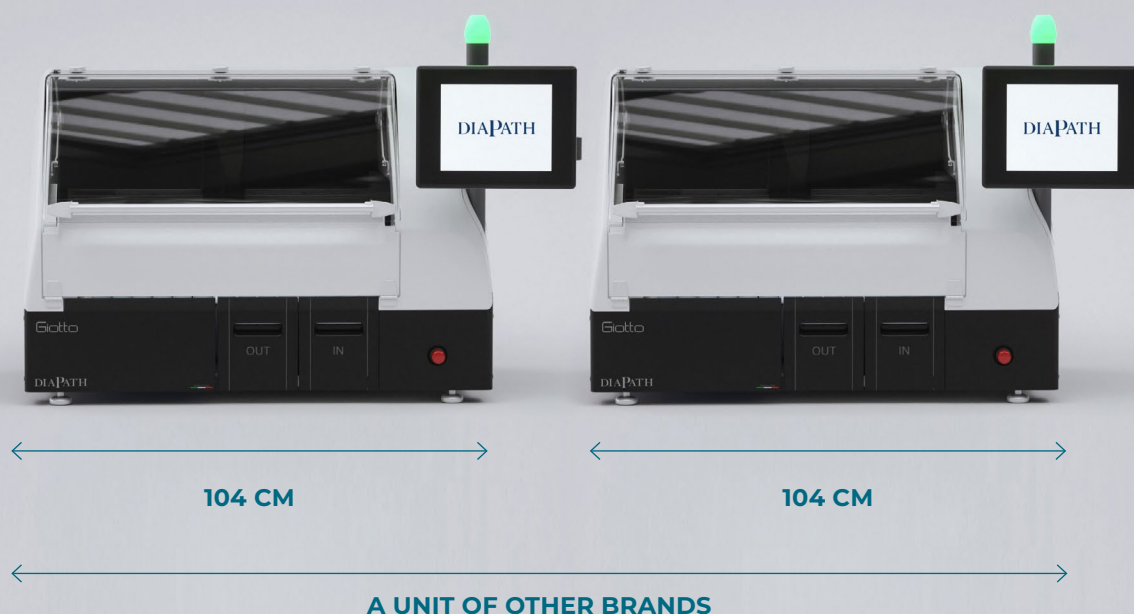


OPERATIONS TRACEABILITY

Thanks to the **Stain ID technology**, Giotto System is able to memorize all the movements of each basket carrying the slides. This function allows to **restore a staining** in case of interruption of the staining protocol, from the last step carried out before the adverse event.

Giotto: high productivity in minimum space.

THE POWER OF PARALLEL STAINING.





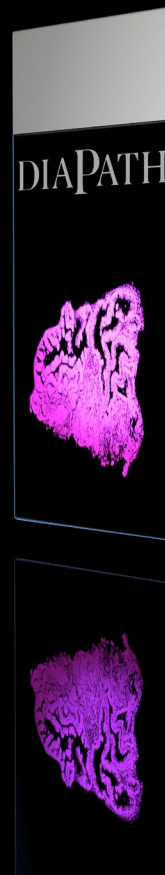
Giotto with Cristallo® is Innovation.

CRISTALLO®

Is the **new and innovative** Diapath solution for slide mounting. It is an ultra-transparent liquid **reagent**, **xylene-free**, which by **immersion** creates a thin and homogeneous layer on the slide that solidifies quickly. It is easy to remove and ideally free of air bubbles.

MEGA SLIDES

This type of sample can be managed by Giotto in automation for **staining and mounting**.



Technical Table

CODE	SDSGT9000	WATER NETWORK PRESSURE	2 bar
SIZE (W - D - H)	1040x620x770 mm	POWER INPUT	250 VA
WEIGHT	95 Kg (accessories included)	SUPPLY VOLTAGE	115-230 V +/- 10%
REAGENT STATIONS	From 26 to 28, customizable	FREQUENCY	50-60 Hz
WATER STATIONS	From 0 to 4, customizable	ASPIRATION SYSTEM	With activated charcoal and the possibility of channeling the vapors
OVEN STATIONS	2 from RT up to 75 °C	PRODUCTIVITY	300-600 slides/hour
RESERVOIR VOLUME	450 ml	REGULATORY STANDARDS	CE-IVD
TOTAL RESERVOIRS	40		



Meet
the expert

Find out more and request
a **virtual demo experience**
with our product specialists



Diapath range of solutions for Anatomic Pathology



Donatello SERIES 3

Automatic
Tissue Processor



Galileo SERIES 2

Rotary
Microtome



Dante

Embedding
system



Cristallo®

Liquid Coverslipping
Technology

Discover the full range on www.diapath.com/products

Accreditation DIAPATH



Co-funded by the EU
"Horizon 2020" programme



Donatello Series wins
A'Design Award Competition
2019 in the "Scientific
Instruments" category



34th World ranking Design
Award 2021
in the "Medical
Appliances" category



Provider of training
credits recognised by
NSH - National Society
for Histotechnology

Diapath S.p.A.

Via Pietro Savoldini, 71 — 24057 Martinengo (BG) - IT
T +39 0363 986411 — info@diapath.com — diapath.com

